

# Invisible no more? How time use surveys measure unpaid work

**Eleanor Carey, Technical Manager, Data2X**

Launch of Global Center of Excellence on Gender Statistics  
and

First Global Conference on Gender Equality and the Measurement of Unpaid Care and Domestic Work

Mexico City, 11<sup>th</sup> September, 2018

data2x<sup>o</sup>



# Data2X report: Invisible No More?

## Country Case Studies

Albania	Kazakhstan
Cambodia	Mexico
Chile	Moldova
Colombia	Mongolia
Egypt	South Africa
Ethiopia	South Korea
Finland	Thailand
Ghana	Tanzania
India	Uruguay

## Volume I: A Methodology and Policy Review of How Time Use Surveys Measure Unpaid Work

Written by Mayra Buvinic and Elizabeth M. King

- Featuring an inventory of **257** time use surveys across **88** countries

## Volume II: Country Case Studies

- Includes **18** country case studies on the data-to-policy link of time use surveys

Read the report and case studies at [www.data2x.org/time-use-report](http://www.data2x.org/time-use-report)



# Evidence of policy momentum: unpaid work

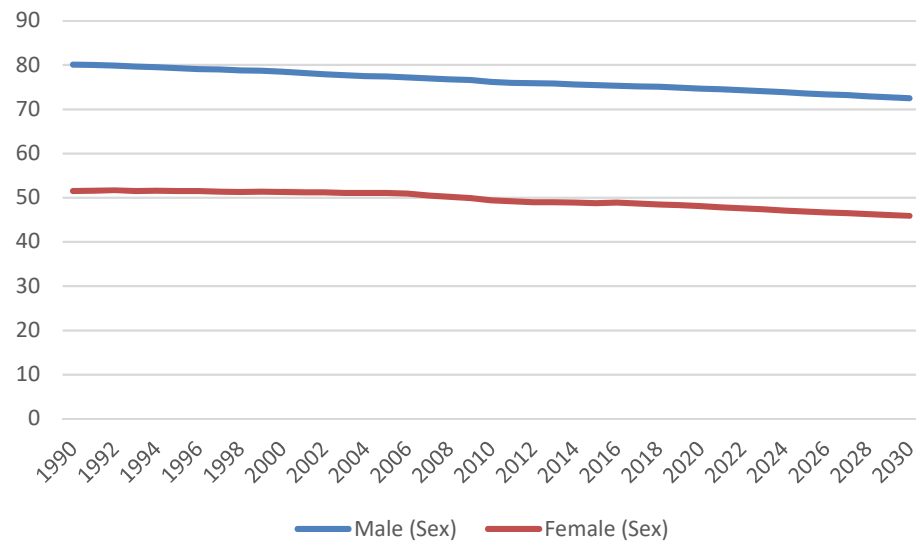
**Sustainable Development Goals**

**19<sup>th</sup> International Conference of Labour Statisticians (ICLS 19)**

**ICATUS 2016**

- Indicator 5.4.1
- Broadened definition of work
- Employment is counted only as work for “pay or profit” →
- Harmonizes activities with ICLS 19
- Helps ensure international comparability and quality of time use data

# Global Female and Male Labour Force Participation Rate, 1990-2030



Source: ILOSTAT Database



# Advantages of Time Use Data for gender-sensitive policy

**Unpaid domestic and care work**

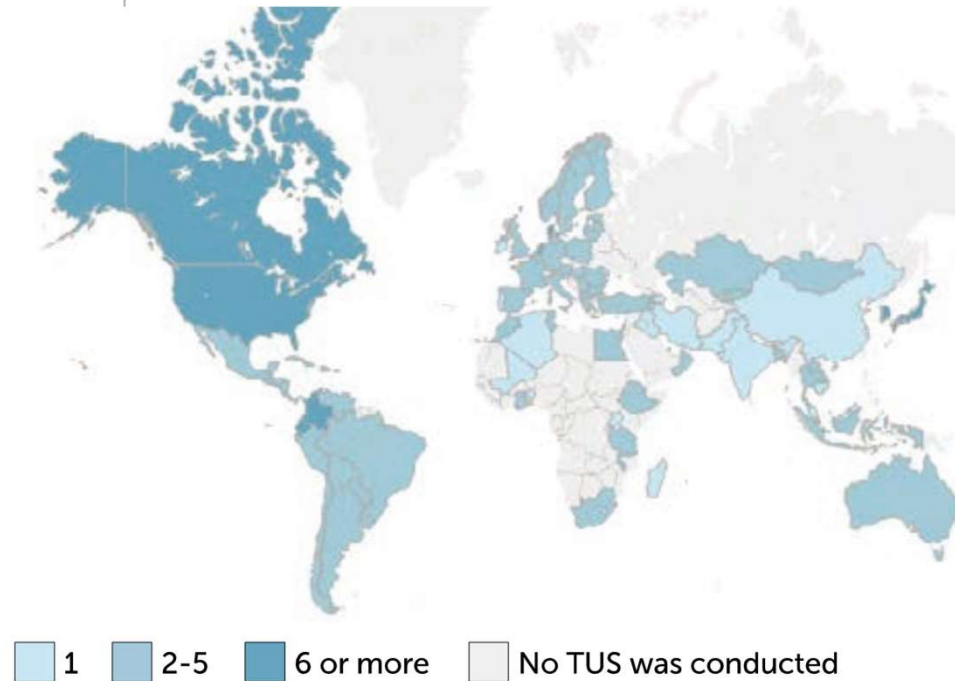
**Unpaid/ poorly captured market work**

**Simultaneous paid and unpaid activities can be difficult to capture**

- Time use surveys are currently the most appropriate way to measure unpaid work activities
- Unpaid family workers
- Casual, temporary, seasonal labor in agriculture and small informal enterprises
- Women often perform paid and unpaid activities simultaneously

# Time use surveys conducted globally

**Figure 4. Number of time use surveys completed by country as of 2017.**



# Time use surveys' role in policymaking – country studies

Direct Policy Influence	Indirect Policy Influence	No or Unclear Policy Influence
Albania	Mongolia	Chile
Cambodia	South Korea	Egypt
Colombia	Tanzania	Ethiopia
Finland		Ghana
Mexico		India
Moldova		Kazakhstan
Uruguay		Thailand
		South Africa

# Data to policy: chronological stages

Across 18 country case studies:





# What has helped foster the data-to-policy link?

Identify and  
prioritize



Demand-driven data is more successful

# What has helped foster the data-to-policy link?

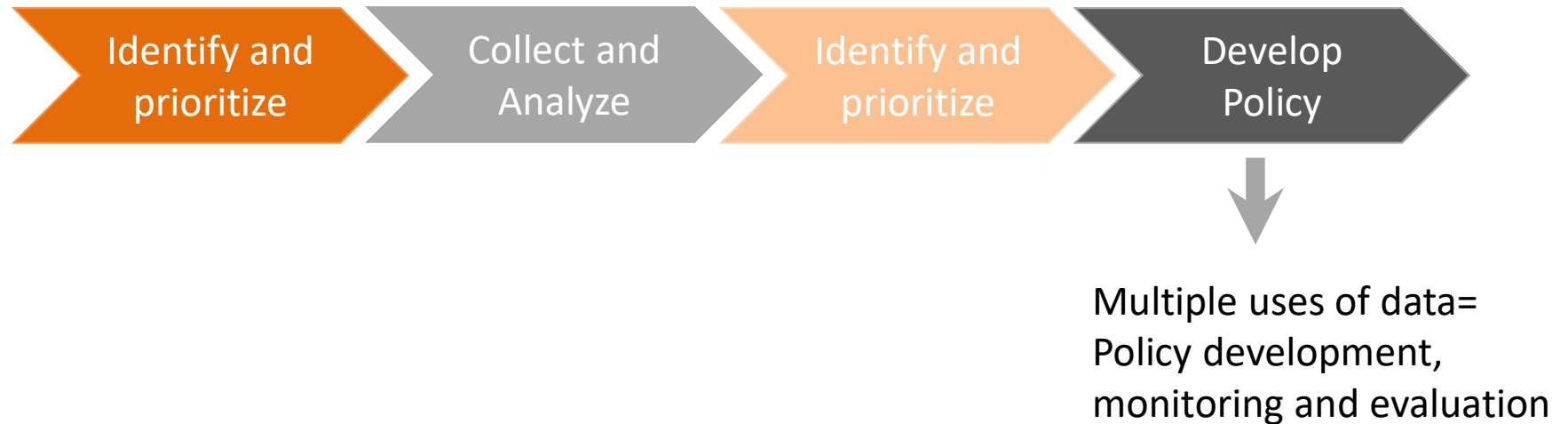


High quality data =  
better chance of policy  
impact

# What has helped foster the data-to-policy link?



# What has helped foster the data-to-policy link?



# What are the steps to link data to policy?





# Time use surveys' role in policymaking – country studies

## Direct policy effects:

Albania, Mexico

Cambodia , Colombia,  
Uruguay

Moldova

Finland

- Used to define, monitor, or evaluate gender equality policies
- Care policies
- Employment policies for women, child care centers
- Employment projects for rural women, early retirement policies, child/family policies, media and cultural programs



## Conclusions

- Unravelling the relationship between paid and unpaid work is crucial for economies: Time Use Data provides the missing link
- Time Use Data has directly and indirectly impacted policy
- But, TU data remains underproduced and underutilized
- There are a number of factors that mediate data uptake
- Policy-makers and data producers must work together to produce relevant and useful information in their context